

Cuvée du Connétable - Sancerre

White- 2017

Fresh and opulent

« A tribute to Louis de Sancerre »

Louis de Sancerre is one of the great men of France's history: he was at once a companion in arms of Du Guesclin and a friend of King Charles V. In recognition of his merit and talent, he was appointed Marshal of France in 1368 and then Constable in 1397. This wine pays homage to this emblematic figure of the town of Sancerre. It boasts a strong personality, along the lines of the Constable: lively, frank, refined and complex.

Vine-growing and winemaking

Grape variety: Sauvignon

Soils/Terroirs: Chiefly clay and flint stone/ flint stone and chalky clay


Type de vinification et particularités: The best parcels of Chateau de Sancerre; old vines are selected to obtain a fresh and opulent wine. The juices are selected according to their freshness, fruit and complexity and then thinned by settling, in view of obtaining plenty of finesse and tension. They are then placed in barrels for fermentation purposes. Slightly toasted staves are used to maintain the balance between the oak and the wine. Stirring is under taken during the maturing phase to bring about roundness. **Maturing period** : Ageng for 10 months in 400-L barrels previously used to make wine once or twice before and then in thermoregulated stainless steel vats for three months.


The vineyard

Our vineyard is situated in several districts within the appellation area: Sancerre, Bué, Crézancy, Thauvenay and Ménétreol. The three terroirs characterizing the Sancerre appellation are represented: white soils, flint stone and limestone. Cuvée du Connétable is derived from a selection of Sauvignon, harvested from the best parcels at Chateau de Sancerre. The terroir is essentially made up of flint stone from the district of Sancerre, which provides freshness and vivacity.

Tasting notes

Color 
Shiny golden color

Aromas 
Refined and expressive nose with well melted oak notes.

On the palate 
Fruity with notes of apricot, yellow peach and a zest of grapefruit. Well melted oak. Good roundness with notes of butter and cake.

Food pairing

Ideal with seafood, white meat, white fleshed fish, or even goat's cheese.

Serving temperature:
14 to 16 °C

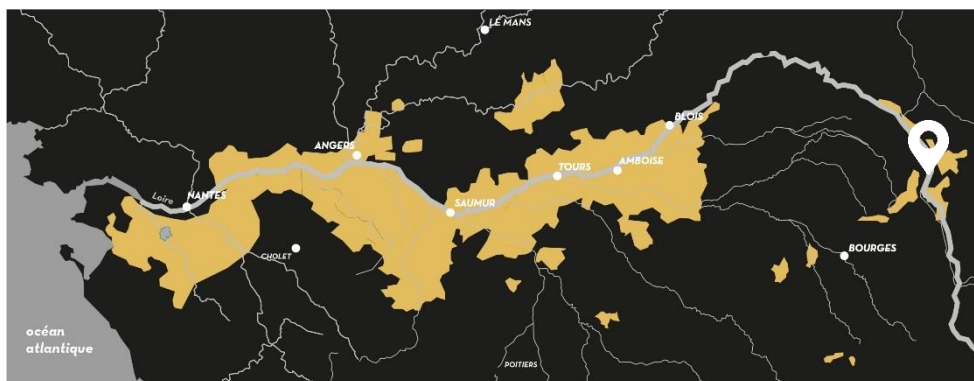
Ageing potential.
5 to 10 years



Meilleurs Terroirs, where Great Wines are born ...

Comprising many exceptional castles, the Loire Valley is also called the Valley of the Kings. It was the crucible of France's art of living and power, and is without a doubt the cradle of high quality wines. Meilleurs Terroirs is the portfolio of brands, specializing in great wines derived from the region's most well-known terroirs. Such as Chateau de Sancerre, Chateau la Varière, Domaine de la Perruche... exceptional wines from great chateaux and estates, which have built the reputation of our finest appellations.

Loire Valley wines flourish in a **unique cultural landscape**, classified as a UNESCO World Heritage site. The Loire Valley vineyard extends over 65,000 hectares within 4 regions – Pays Nantais, Anjou-Saumur, Touraine and Centre Loire. All and all, this wine route represents a distance of 800 km.



"The Loire Valley is France's 3rd largest winegrowing region. Stretching from the Atlantic coast to the Centre region, it is a point of equilibrium, where north meets south, sophistication meets freshness, art meets literature, and tradition meets modernity. These harmonious contrasts - plus the generally temperate climate and extraordinarily varied terroirs - have produced the world's most diverse array of wines. As a result, France's longest river is capable of providing a rich selection of over 50 still and sparkling AOP and PGI wines and over 10 varieties (Chenin, Sauvignon, Chardonnay, Melon de Bourgogne, Cabernet Franc...). All of the wines are in the nature of the Loire Valley."

About Chateau de Sancerre

« A moment suspended by the beauty of our senses »

Situated at the very heart of the town with the same name, Chateau de Sancerre is one of the few French chateaux called after an appellation. The history of the estate has marked the area, especially thanks to Louis de Sancerre, at once Constable and Marshal of France (1342-1402). As of 1919, the property's vineyard grew and currently represents 55 hectares. Chateau de Sancerre's wines are vinified, matured and bottled on-site. The diversity of the parcels, comprising white soils, flint stone and limestone is perfectly well mastered in view of adapting the vine-growing to each terroir. The art of blending is carefully undertaken in keeping with Louis de Sancerre's motto - "Overtake the very best". Our Sancerre wines are renowned worldwide and satisfy the finest connoisseurs.

Refined – Rare – Elitist

