



Domaine de la Perruche

A Meilleurs Terroirs selection

Saumur Champigny Clos de Chaumont

Red - 2017

Elegant and fruity

UNIQUE MINERALITY REFLECTING THE CHALK-LADEN TERROIR

Clos de Chaumont is one of the finest parcels at Domaine de la Perruche and counts among the last plots harvested within the Saumur Champigny appellation area. Its altitude protects the vines from springtime frost and favors their exposure to summertime sunshine. Careful vine-growing and winemaking techniques allow the Cabernet Franc variety to fully express its typical features.

From the vineyard to the cellar

Grape variety: Cabernet Franc

Soils/Terroirs: Tuffeau stone chalk. Well drained terroir facing south.

Winemaking features: As of mid-October, the grape berries are tasted on a daily basis to determine the best time to harvest. Special attention is paid to the pips that have to be brown and crunchy with a hint of hazelnut. The entire harvest is sorted on a table to select perfectly well ripened grapes for winemaking. The first cold maceration is carried out before fermentation, thereby extracting color and aromas. Then follows a fermentation period with a 20 to 22-day maceration at a controlled temperature (between 22 and 27°C). The extraction of aromatic compounds and tannins is achieved with regular pumping over and cap punching. Maturing in stainless steel vats conserves the wine's fruity aromas.

Maturing period: 6 to 8 months.

Vineyard

Domaine de la Perruche is situated in the district of Monstoreau, at the heart of the Saumur Champigny appellation area. It is divided into two different vineyard plots. The first parcel is situated on a plateau overlooking the Loire. Its altitude is to our advantage, as it protects the vineyard from springtime frost and favors exposure to summertime sunlight. The second parcel is located on a slightly different plateau in terms exposure and soil – more stony. At the bottom of the vineyard, along the Loire, our modern winery transforms the vineyard's grapes into wine. Directly opposite, a maturing cellar boasts troglodyte heritage, notably on the hillside.

TASTING NOTES

Color

Red ruby, limpid and brilliant.

Aromas

Expressive, with red and black berry notes.

Palate

Tasty, with freshness and nice tannic structure.

FOOD PAIRING

White and red meat, grilled or stewed, game, surface ripened soft cheeses.

Serving temperature:
Between 15 and 16 degrees.



Médaille d'Or

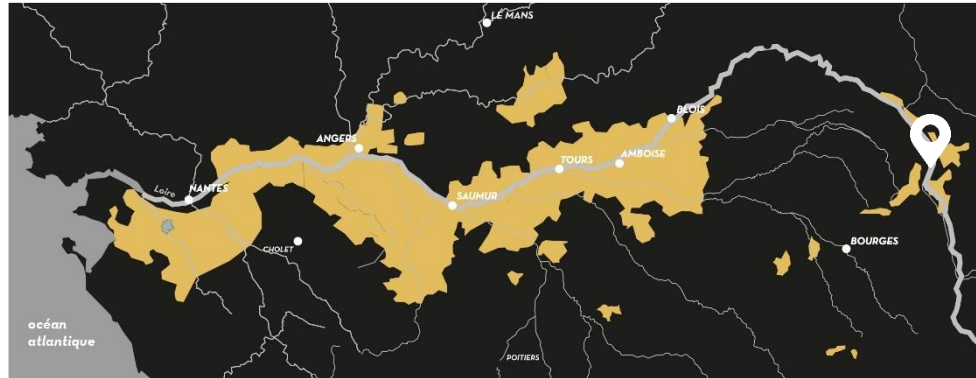
CGA 2018 & Concours des
Grands vins de Mâcon 2018



Meilleurs Terroirs, where Great Wines are born ...

Comprising many exceptional castles, the Loire Valley is also called the Valley of the Kings. It was the crucible of France's art of living and power, and is without a doubt the cradle of high quality wines. Meilleurs Terroirs is the portfolio of brands, specializing in great wines derived from the region's most well-known terroirs. Such as Chateau de Sancerre, Chateau la Varière, Domaine de la Perruche... exceptional wines from great chateaux and estates, which have built the reputation of our finest appellations.

Loire Valley wines flourish in a **unique cultural landscape**, classified as a UNESCO World Heritage site. The Loire Valley vineyard extends over 65,000 hectares within 4 regions – Pays Nantais, Anjou-Saumur, Touraine and Centre Loire. All and all, this wine route represents a distance of 800 km.



"The Loire Valley is France's 3rd largest winegrowing region. Stretching from the Atlantic coast to the Centre region, it is a point of equilibrium, where north meets south, sophistication meets freshness, art meets literature, and tradition meets modernity. These harmonious contrasts - plus the generally temperate climate and extraordinarily varied terroirs - have produced the world's most diverse array of wines. As a result, France's longest river is capable of providing a rich selection of over 50 still and sparkling AOP and PGI wines and over 10 varieties (Chenin, Sauvignon, Chardonnay, Melon de Bourgogne, Cabernet Franc...). All of the wines are in the nature of the Loire Valley."

About DOMAINE DE LA PERRUCHE **« A moment suspended by the beauty of our senses »**

Domaine de la Perruche is a great Loire Valley wine. Situated in the district of Montsoreau, that is famous for its castle, its vines are planted in the eastern part of the Saumur Champigny appellation, on a plateau, overlooking the Loire. Few vineyards within this area are as concentrated as Domaine de la Perruche. Indeed, it is made up of two pieces of land, when most other estates are highly fragmented. Vine-growing is adapted to each parcel, thereby requiring good knowledge and careful monitoring. Domaine de la Perruche specializes in fruity and supple red Saumur wines with good aromatic concentration, thanks to well ripened harvests.

Sensorial – Refined – Rare – Elitist

