



Domaine de la Perruche

Part of the Meilleurs Terroirs range

Saumur Champigny – Terroir de Craie Red – 2018

Refined and strong

« A mineral expression specific to the limestone terroir »

This wine is made from parcels belonging to the vineyard of Domaine de la Perruche - a terroir of flinty-clay on tuffeau rock, and a chalk subsoil, well adapted to Cabernet Franc. Careful ageing techniques are implemented to highlight the typical mineral expression offered by the limestone terroir.

Vine-growing and winemaking

Grape variety: Cabernet Franc

Soils/Terroirs: A terroir of flinty-clay on tuffeau rock

Vinification details: Before the harvest, we taste the berries of each parcel to evaluate the maturity of the pips and to check for the presence of harsh tannins. Once harvested, the grapes are sorted on a vibrating table to remove the petiole and damaged fruit. They are macerated for a 15 days at a controlled temperature, including an initial phase without fermentation, allowing for the extraction of color and aromas. The maturing techniques highlight the mineral expression of the limestone terroir.

Maturing period: 6 months in vat


The vineyard


Domaine de la Perruche is situated in the district of Monstoreau, at the heart of the Saumur Champigny appellation. The estate is split into two pieces of land.

The first one is located on a plateau, overlooking the Loire. The altitude is beneficial as it protects the vineyard from springtime frost and provides summertime sunshine. The other one is located on a plateau that is slightly different in terms of soil (stonier) and exposure. At the foot of the vineyard, along the banks of the Loire, a modern cellar elaborates wine from the estate's grapes. It faces an ageing cellar on a hillside, boasting a fabulous troglodyte heritage.

Tasting notes

Color 
Ruby with purple tints.

aromas 
Elegant with fresh fruity notes like raspberry.

On the palate 
Good freshness and good well balanced fruit.

Food Pairing

Ideal with saucy dishes, summer cuisine or even cheese.

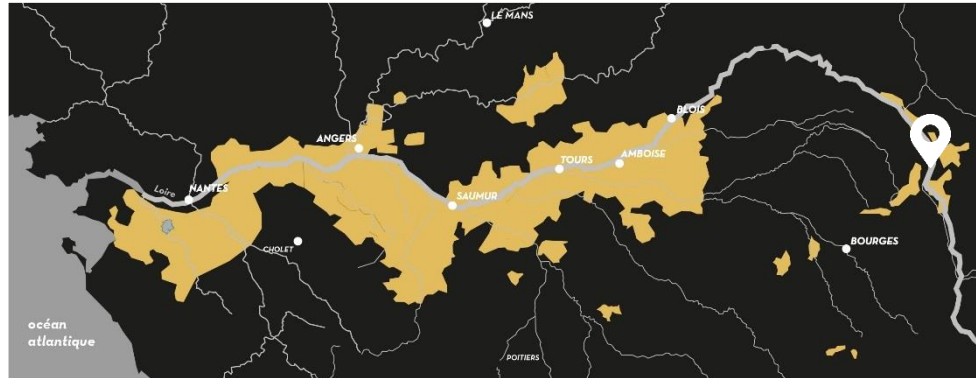
Serving temperature:
15 to 16 °C



Meilleurs Terroirs, where Great Wines are born ...

Comprising many exceptional castles, the Loire Valley is also called the Valley of the Kings. It was the crucible of France's art of living and power, and is without a doubt the cradle of high quality wines. Meilleurs Terroirs is the portfolio of brands, specializing in great wines derived from the region's most well-known terroirs. Such as Chateau de Sancerre, Chateau la Varière, Domaine de la Perruche... exceptional wines from great chateaux and estates, which have built the reputation of our finest appellations.

Loire Valley wines flourish in a **unique cultural landscape**, classified as a UNESCO World Heritage site. The Loire Valley vineyard extends over 65,000 hectares within 4 regions – Pays Nantais, Anjou-Saumur, Touraine and Centre Loire. All and all, this wine route represents a distance of 800 km.



"The Loire Valley is France's 3rd largest winegrowing region. Stretching from the Atlantic coast to the Centre region, it is a point of equilibrium, where north meets south, sophistication meets freshness, art meets literature, and tradition meets modernity. These harmonious contrasts - plus the generally temperate climate and extraordinarily varied terroirs - have produced the world's most diverse array of wines. As a result, France's longest river is capable of providing a rich selection of over 50 still and sparkling AOP and PGI wines and over 10 varieties (Chenin, Sauvignon, Chardonnay, Melon de Bourgogne, Cabernet Franc...). All of the wines are in the nature of the Loire Valley."

About DOMAINE DE LA PERRUCHE **« A moment suspended by the beauty of our senses »**

Domaine de la Perruche is a great Loire Valley wine. Situated in the district of Montsoreau, that is famous for its castle, its vines are planted in the eastern part of the Saumur Champigny appellation, on a plateau, overlooking the Loire. Few vineyards within this area are as concentrated as Domaine de la Perruche. Indeed, it is made up of two pieces of land, when most other estates are highly fragmented. Vine-growing is adapted to each parcel, thereby requiring good knowledge and careful monitoring. Domaine de la Perruche specializes in fruity and supple red Saumur wines with good aromatic concentration, thanks to well ripened harvests.

Sensorial – Refined – Rare – Elitist

